

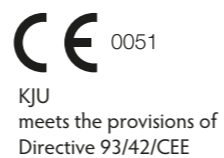


LASER TYPE	Q-Switched Nd: YAG (1 Xenon lamp and 2 Yag Bar)
WAVELENGTHS	1064 nm, 532 nm
PULSE ENERGY	500 - 1600 mJ (1064 nm) 300 - 800 mJ (532 nm)
FREQUENCY	1 - 6 Hz
BEAM DELIVERY	Direct Delivery (integrated aiming beam)
SPOT SIZE	2 - 7 mm
ELECTRICAL REQUIREMENTS	100 - 240 Vac, 800 VA (Max) / 50-60 Hz
DIMENSION	33cm (W) x 36cm (D) x 55cm (H)
WEIGHT	24 Kg



BEAUTY INNOVATION

REMOVAL OF TATTOOS AND PIGMENTED LESIONS



LASERING S.r.l.
Via Staffette Partigiane, 54 - 41122 Modena, Italy
Tel. + 39 059 450 999
Fax + 39 059 311 096
E-mail: lasering@lasering.it
www.lasering.it | www.lasering-med.com

LASERING USA
220 Porter Drive
Suite 120
San Ramon, CA 94583
Phone 866-471-0469
E-mail: info@laseringusa.com | www.laseringusa.com

KJU 020619



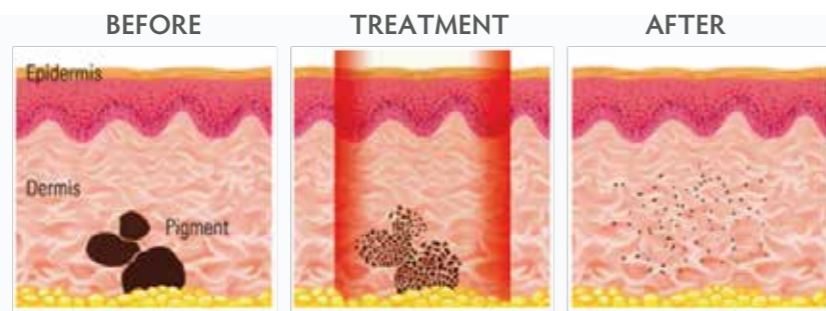
DUAL MODE Q-SWITCHED ND: YAG LASER



LASERING
Medical Laser

THE Q-SWITCHED LASER TAILORED TO YOUR NEEDS

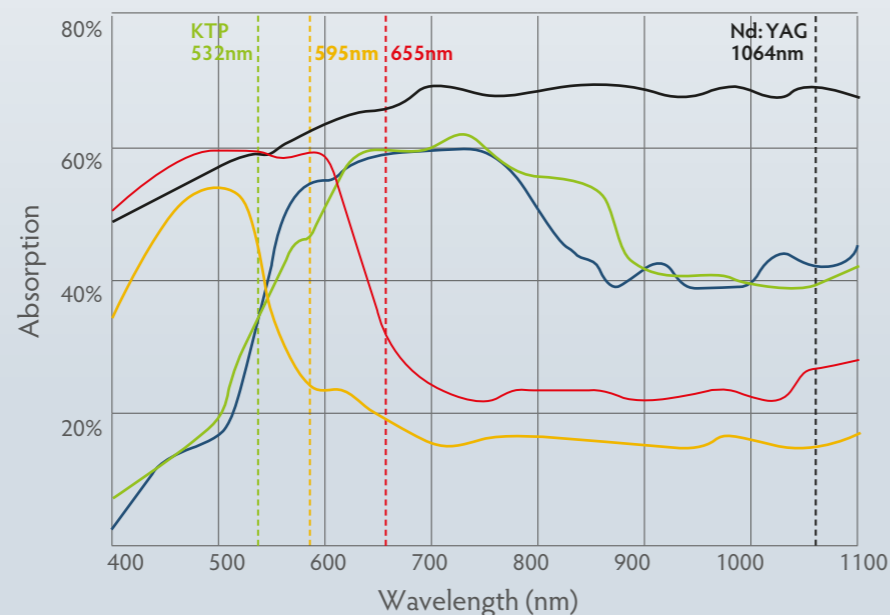
Lasering brings you KJU, the **Q-Switched** laser for elective tattoo and pigmented lesion removal treatment. Exploiting two wavelengths (1064 and 532 nm) with high peak power and very short pulses, KJU allows the physician to operate quickly and painlessly in complete safety. Portable and reliable, KJU today represents the best of Made in Italy, it is technologically advanced and certified and able to effectively satisfy the ever more numerous requests of patients. The natural skin pigmentation and the tattoo ink particles quickly absorb the high **Q-Switched** energy peaks creating a "photoacoustic" effect in the dermis cells containing the pigments. The result is that the **pigments are shattered** into small particles that are then removed through the lymphodrainage system.



TATTOOS

In order to make the treatment effective, the pigment necessarily has to absorb the laser beam. Thanks to the **two wavelengths**, KJU allows **removing several colours with a single system**. When the pigments are black or blue, the best results are obtained by treating them with the 1064nm wavelength, also in patients with a dark phototype thanks to the low interaction with melanin. Red or pinkish tattoos are treated with a green laser beam (532nm). The number of treatments may vary depending on the type of tattoo, the colour, the depth and density of the pigment, the anatomic site and the age of the patient and the tattoo.

INK PIGMENT ABSORPTION



BENIGN PIGMENTED LESIONS

Epidermal lesions can be treated using the 532nm wavelength, which is strongly absorbed by the melanin, hence mainly acting in the skin surface layers. Dermal lesions lie deeper and therefore need to be treated using the 1064nm wavelength able to penetrate deeper into the skin. Like for tattoo removal, only the Q-Switched emission **is able to effectively treat dermal lesions** without running the high risk of scars.

ADVANTAGES

- COMPACT AND PORTABLE **PLUG & PLAY** SYSTEM
- EASY TO USE AND EASY TO SELECT THE WAVELENGTH
- ELECTIVE TREATMENT FOR DERMAL AND EPIDERMAL PIGMENTED LESIONS
- MINIMAL RISK OF SIDE EFFECTS
- EFFECTIVE ON DARK TATTOOS (BLACK, BLUE)
- EXCELLENT RESULTS AFTER JUST A FEW TREATMENT



DUAL MODE
Q-SWITCHED
ND: YAG LASER

